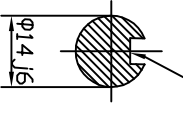


A - A

5x5x20 DIN 6885



Flange B14/71A shaft-14

ECH 1/7,2/19-02  
0 19 41 9020

EC 3/7,2/27  
0 31 42 7000

rated power 1 kW  
 rated voltage 72 V  
 rated current 19 A  
 rated speed 1900 min<sup>-1</sup>  
 operation mode S1  
 excitation chunt  
 protection IP 21  
 insulation F  
 weight 10.83 kg  
 length L 224  
 char. curve H72B02  
 rotation C.W./D.F  
 conn. diag. fig. 1

3 kW  
 72 V  
 67 A  
 2700 min<sup>-1</sup>  
 S2-3min  
 compound  
 IP 21  
 F  
 224  
 C.W./D.F  
 fig. 2

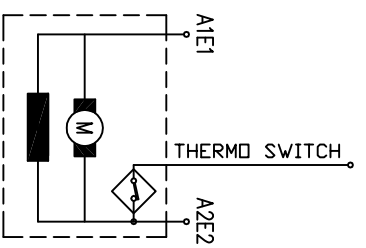


fig. 1

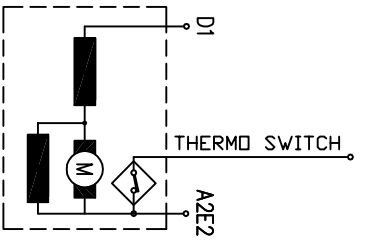


fig. 2

	DC motor	ECH 1/7,2/19-02	chunt		
	IP	IP 21	excitation		
	insulation class	F	min <sup>-1</sup>	1900	
	kV	1	V	72	A
kg		rpm			
www.eiprom-ems.com					

	DC motor	EC 3/7,2/27	compound		
	IP	IP 21	excitation		
	insulation class	F	min <sup>-1</sup>	2700	
	kV	3	V	72	A
kg		rpm			
www.eiprom-ems.com					

15.05.2008		Eiprom-EMS
15.04.2008		
04.03.2008		
16.01.2008		
01.11.2007		
Rev.		