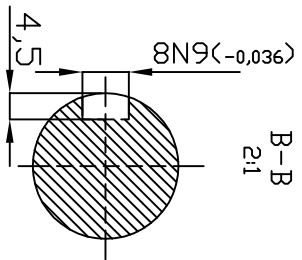


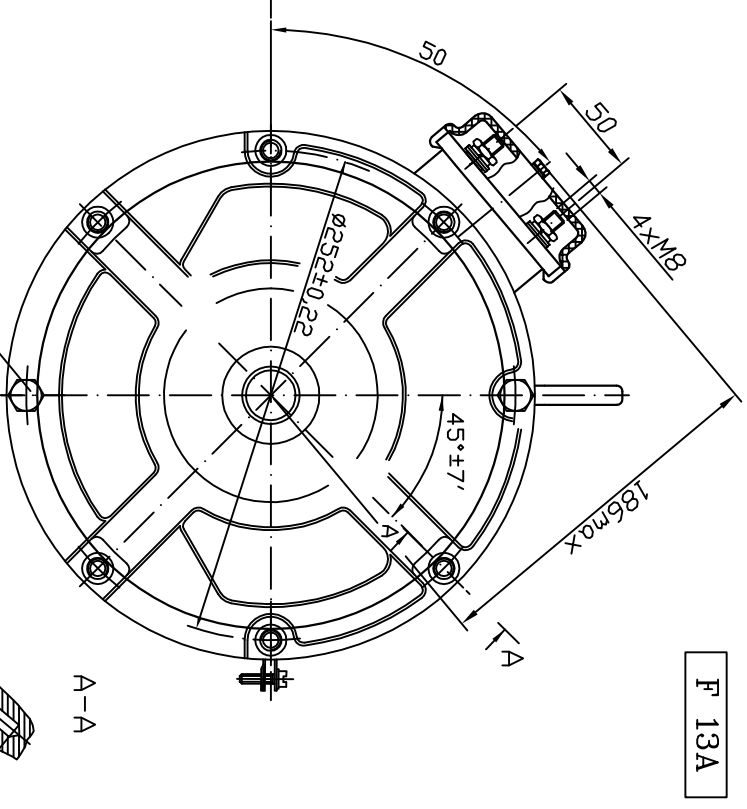
Rotation (viewed from drive end)
 CW: Connect D1 to A2, "+" to D2 and "-" to A1
 CCW: Connect D2 to A2, "+" to D1 and "-" to A1



B-B
2:1

Coating black

The bolt is unscrewed before mounting



F 13A

FT 9/4,5/16-03
 0 42 31 6030

- rated power 9 kW
- rated voltage 48 V
- rated current 235 A
- rated speed 1600min⁻¹
- operation mode S2-60
- excitation protection series IP 21
- insulation F
- weight 73,2kg
- length L 416
- char. curve S48F02
- rotation rev

Fig. 1

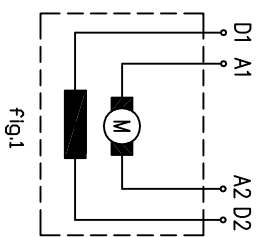


Fig.1

	DIC motor	<input type="checkbox"/>	IP	<input type="checkbox"/>	IP
excitation	<input type="checkbox"/>	Insulation class	<input type="checkbox"/>	<input type="checkbox"/>	<input type="checkbox"/>
kV	<input type="text"/>	A	<input type="text"/>	<input type="text"/>	<input type="text"/>
rpm	<input type="text"/>	kg	<input type="text"/>	<input type="text"/>	<input type="text"/>
date	<input type="text"/>		<input type="text"/>	<input type="text"/>	<input type="text"/>
www.eiprom-ems.com					

17.08.2007	
15.08.2007	
05.06.2007	
14.05.2007	
11.05.2007	
Rev.	

Eiprom-EMS