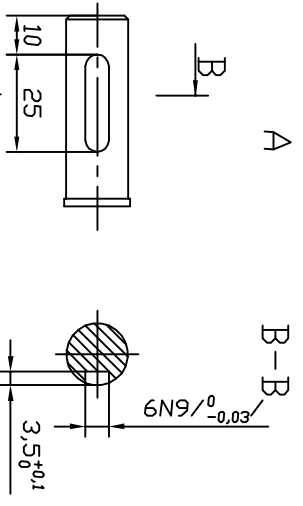
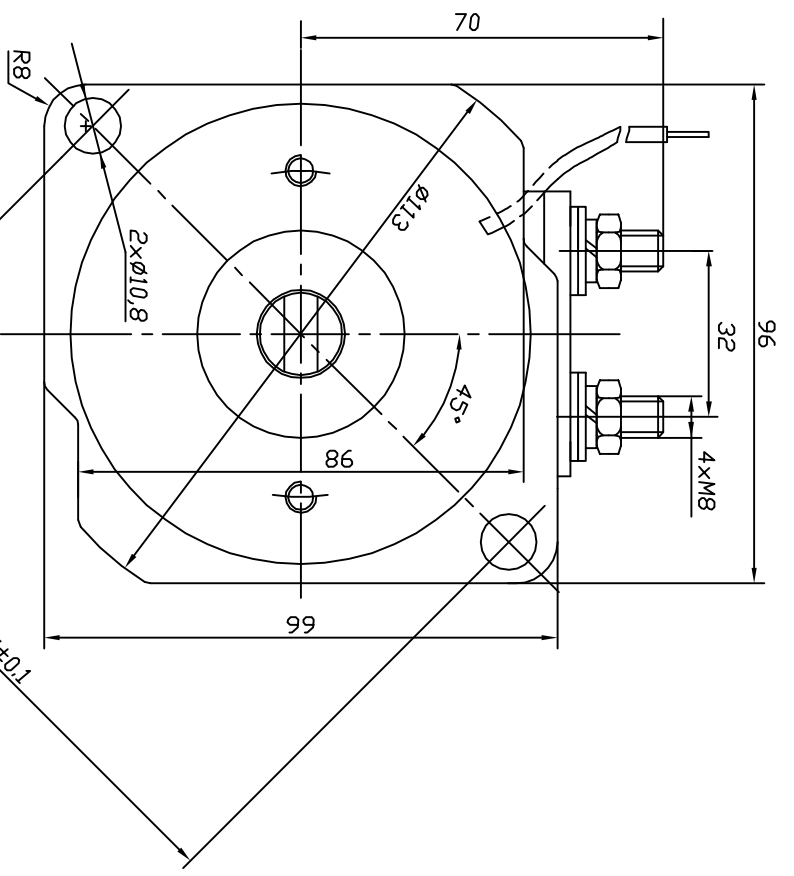
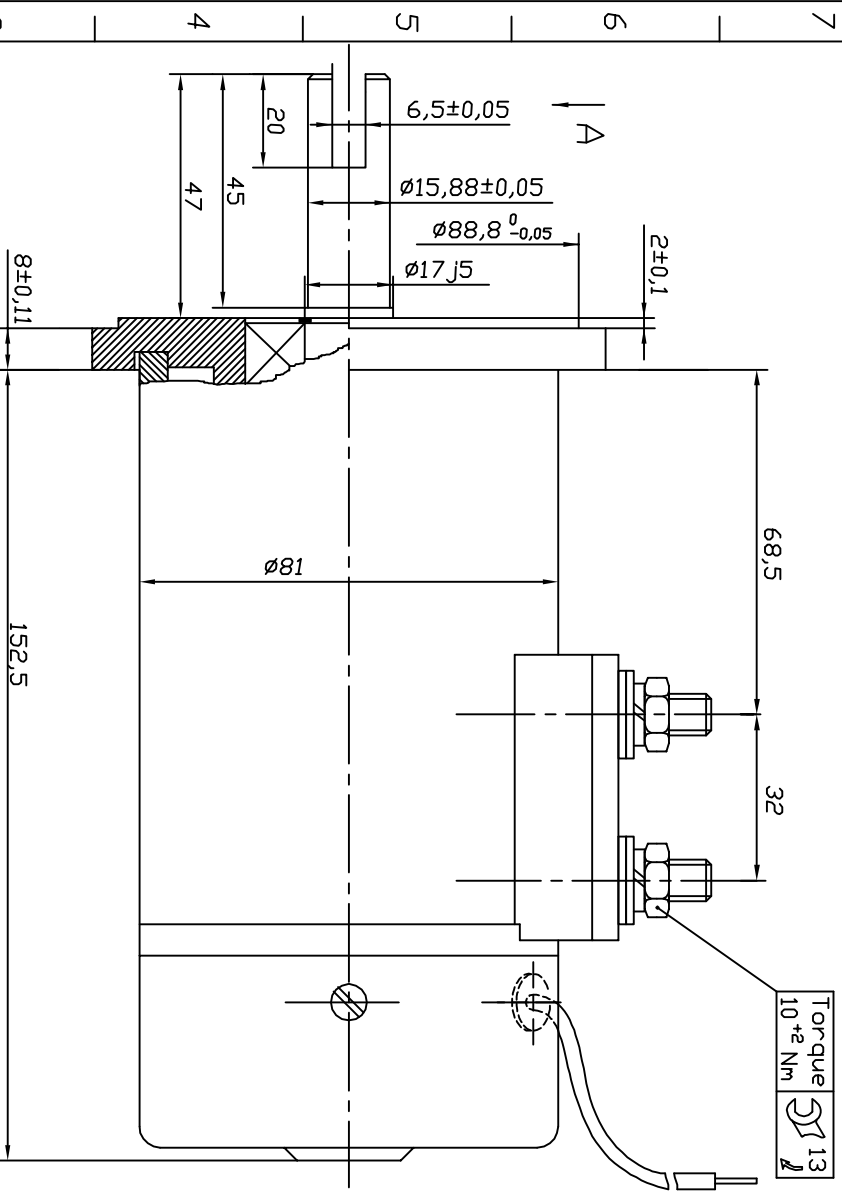


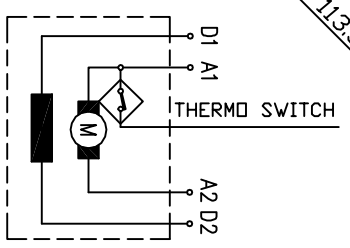
KO 28R



<b>KOSTOV MOTORS</b>		excit. _____	
kW _____	A _____	V _____	IP _____
rpm _____	insol _____	SN _____	insulation _____
www.kostov.com			

**EC 0,8/1,2/30-21**  
**0 18 03 0210**

rated power	0,8 kW
rated voltage	12 V
rated current	110 A
rated speed	3000 min <sup>-1</sup>
operation mode	S2-1,5min
excitation	Series
protection	IP 44
insulation	F
weight	3,3 kg
char. curve	S12D02



Rotation (viewed from drive end)  
 CCW: Connect A2 to D2; "+" to D1 and "-" to A1  
 CW: Connect A2 to D1; "+" to D2 and "-" to A1

16.02.2007	<b>Balkancar "G. Kostov" JSC</b>
05.10.2006	
14.03.2006	
25.11.2002	
Rev.	