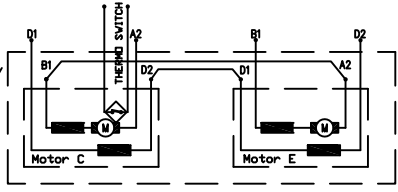


Motor	Duty cycle	Field mode	Volts	Amps	RPM	Torque	kW	fig.
K9" 300V /dual/	S2-60min	series	300	200	5700	80	48	fig. 1
		parallel	144	400	5700	80	48	fig. 2

**KOSTOV 9" 300V /dual/ R20-33232**

rated power 48 kW  
 rated voltage 300 V  
 rated current 200 A  
 rated speed 5800 min<sup>-1</sup>  
 operation mode S2-60min  
 series IP 21  
 excitation H  
 protection YES  
 insulation H  
 interpoles YES  
 weight 50 kg  
 length L  
 chp. curve  
 rotation rev

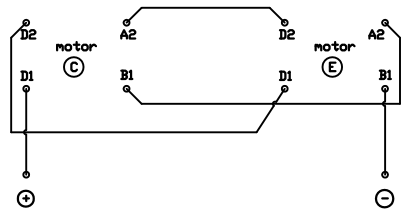


**Balkancar "G. Kostov" JSC**

25.01.2011  
Rev.

Fig. 1

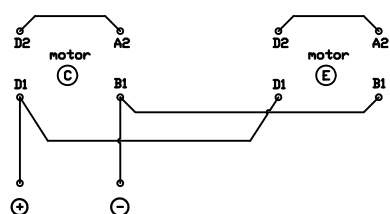
KOSTOV 9" 300V /dual/  
Series - CCWE



Connect: A2(C) to D2(E);  
 D2(C) to D1(E);  
 B1(C) to A2(E);  
 "+" to D1(C);  
 "-" to B1(E)

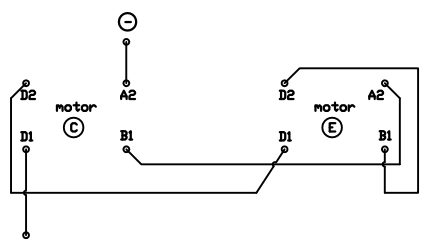
Fig. 2

KOSTOV 9" 300V /dual/  
Parallel - CCWE



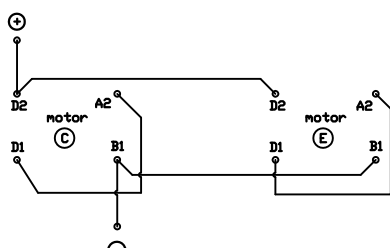
Connect: D1(C) to D1(E);  
 B1(C) to B1(E);  
 A2(C) to D2(C);  
 A2(E) to D2(E);  
 "+" to D1(C);  
 "-" to B1(C)

KOSTOV 9" 330V /dual/  
Series - CWDE



Connect: D2(E) to B1(E);  
 D2(C) to D1(E);  
 B1(C) to A2(E);  
 "+" to A2(C);  
 "-" to D1(C)

KOSTOV 9" 300V /dual/  
Parallel - CWDE



Connect: D2(C) to D2(E);  
 B1(C) to B1(E);  
 A2(C) to D1(C);  
 A2(E) to D1(E);  
 "+" to D2(C);  
 "-" to B1(C)

**Balkancar "G. Kostov" JSC**

25.01.2011  
Rev.