

F 22

ET 6,3/7,5/14-01 ETH 15/7,5/18-03 ETH 9/7,5/18  
 0 38 51 4010 0 49 51 8030 0 42 51 8000

rated power	6,3 kW	15 kW	9 kW
rated voltage	80 V	80 V	80 V
rated current	98 A	230 A	135 A
rated speed	1400min <sup>-1</sup>	1800min <sup>-1</sup>	1800min <sup>-1</sup>
operation mode	S1	S2-60min	S2-60min
excitation	series	Independent	Independent
protection	IP 21	IP 21	IP 21
insulation	F	F	F
weight	75 kg	90.4 kg	58.4 kg
length L	400	450	350
char. curve	N80F09	N80F09	N80F10
rotation	rev	rev	rev
conn.diag.	fig.1	fig.2	fig.2

Rotation (viewed from drive end)

Rotation (viewed from drive end)

CCW: Connect A2 to D1, '+' to D2 and '-' to A1  
 CW: Connect A2 to D2, '+' to D1 and '-' to A1

	Connect	Connect
CCW	"+" → F1; "-" → F2	"+" → A1; "-" → A2
CW	"-" → F1; "+" → F2	

fig.1

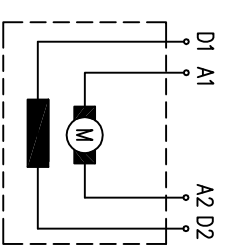
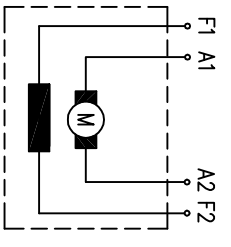


fig.2



DC motor	ip	ipm
excitation	V	A
kw	kg	mm
rpm	kg	mm
duty	kg	mm
date	kg	mm
www.eiprom-ems.com	kg	mm
CE	kg	mm
IP 21	kg	mm
insulation class	kg	mm
AS 18	kg	mm

EIProm-EMS

17.08.2007	
14.05.2007	
24.10.2006	
10.05.2003	
Rev.	