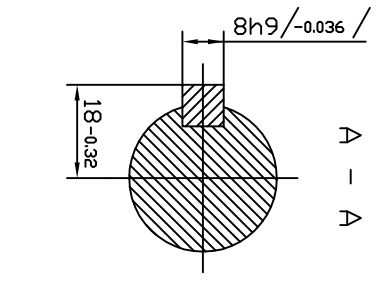


F 22



ET 6,3/7,5/14-01	ETH 15/7,5/18-03	ETH 9/7,5/18
0 38 51 4010	0 49 51 8030	0 42 51 8000
rated power	15 kW	9 kW
rated voltage	80 V	80 V
rated current	230 A	135 A
rated speed	1800min ⁻¹	1800min ⁻¹
operation mode	S2-60min	S2-60min
excitation	Independent	Independent
protection	IP 21	IP 21
insulation	F	F
weight	90,4 kg	58,4 kg
length L	450	350
char. curve	N80F09	N80F10
rotation	rev	rev
conn.diag.	fig.2	fig.2

Rotation (viewed from drive end)

Rotation (viewed from drive end)

CCW: Connect A2 to D1, '+' to D2 and '-' to A1
 CW: Connect A2 to D2, '+' to D1 and '-' to A1

	Connect	Connect
CCW	"+" → F1; "-" → F2	"+" → A1; "-" → A2
CW	"-" → F1; "+" → F2	

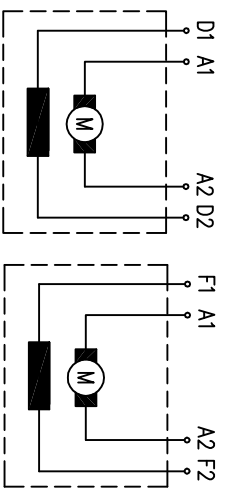
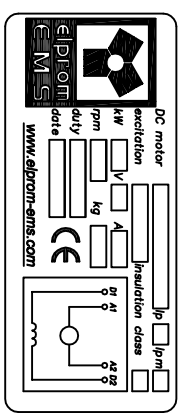


fig.1

fig.2

EIProm-EMS

17.08.2007	
14.05.2007	
24.10.2006	
10.05.2003	
Rev.	