

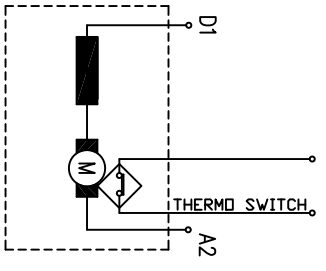
C 33C3

Torque Counter
10⁺² Nm
13

Torque Counter
6⁺² Nm

EC 4,5/2,4/20-03.3
0 34 12 0033

rated power 4,5 kW
 rated voltage 24 V
 rated current 268 A
 rated speed 2000 min⁻¹
 operation mode S3-12%
 excitation series IP 21
 protection F
 insulation S24C29
 length L 17,5 kg
 char. curve C.W./D.E.



Coating: powder paint
grey RAL 9006

DC motor	EC4,5/2,4/20-03.3	IP	excitation series
Insulation class	S24	IP	21
kV	4,5	V	24
A	268	A	268
kg	17,5	da	17,5
durty cycle	S3-12%	da	17,5
www.eldrom-emts.com		www.eldrom-emts.com	

Balkancar "G. Kostov" JSC			
22.02.2012			
Rev.			