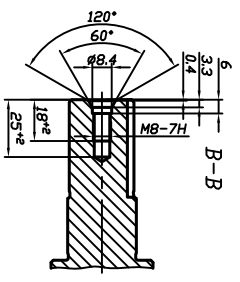
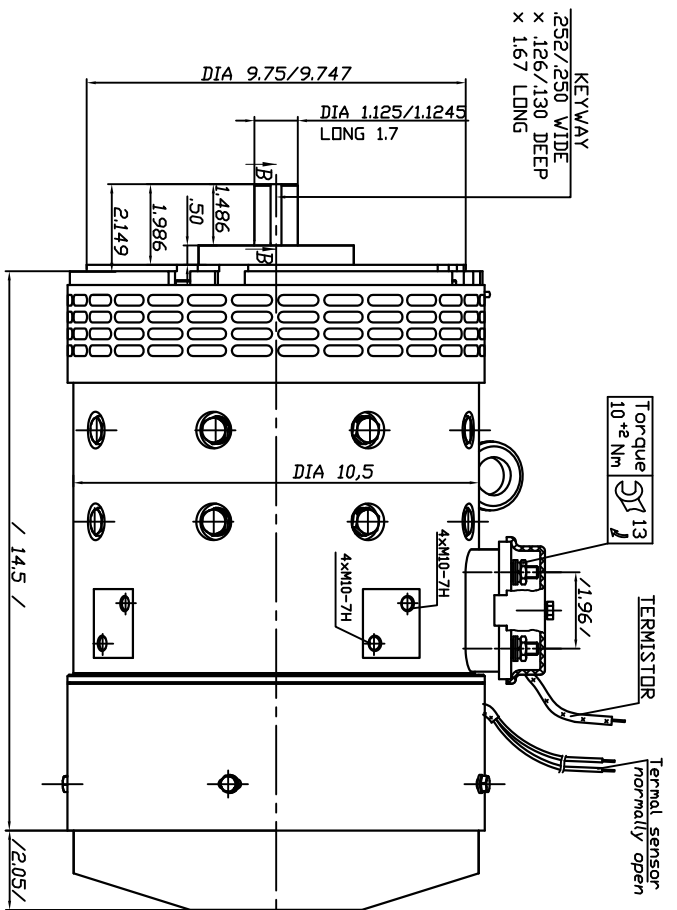


Rotation (viewed from drive end)
 CCW: Connect D2 to A2;
 '+' to D1 and '-' to B1
 CW: Connect D1 to A2;
 '+' to D2 and '-' to B1



K11" Alpha R20-34839

KOSTOV	excit.	<input type="checkbox"/>
MOTORS	IP	<input type="checkbox"/>
AW	A	<input type="checkbox"/>
rpm	V	<input type="checkbox"/>
kg	S.N.	<input type="checkbox"/>
www.kostov-motors.com		

excitation series
 protection IP 21
 insulation H
 interpoles YES
 weight 75 kg
 rotation rev
 Coating: black/yellow

29.01.2013	Balkancar "G. Kostov" JSC
15.03.2012	
22.11.2011	
Rev.	

F 18B2