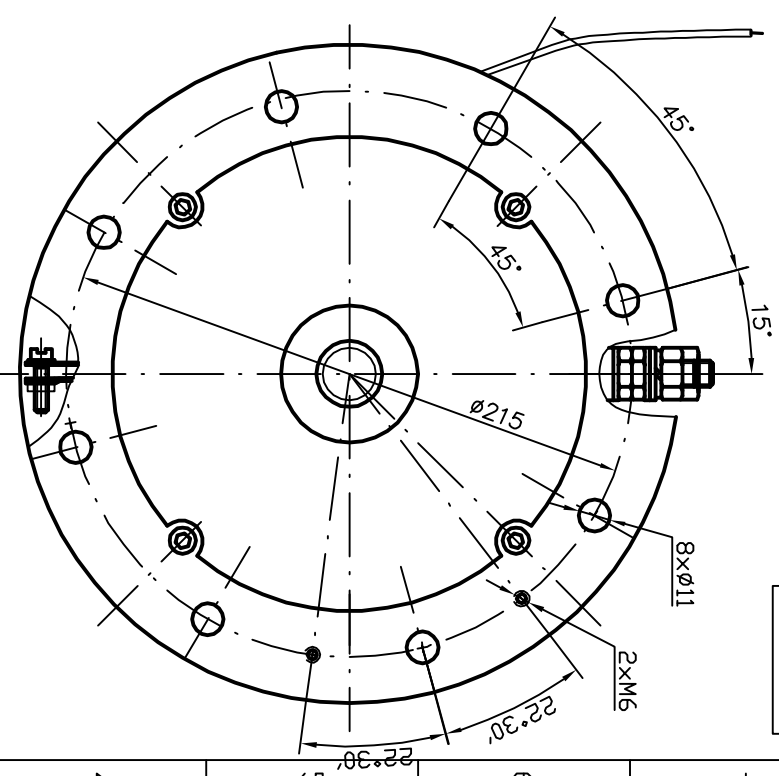
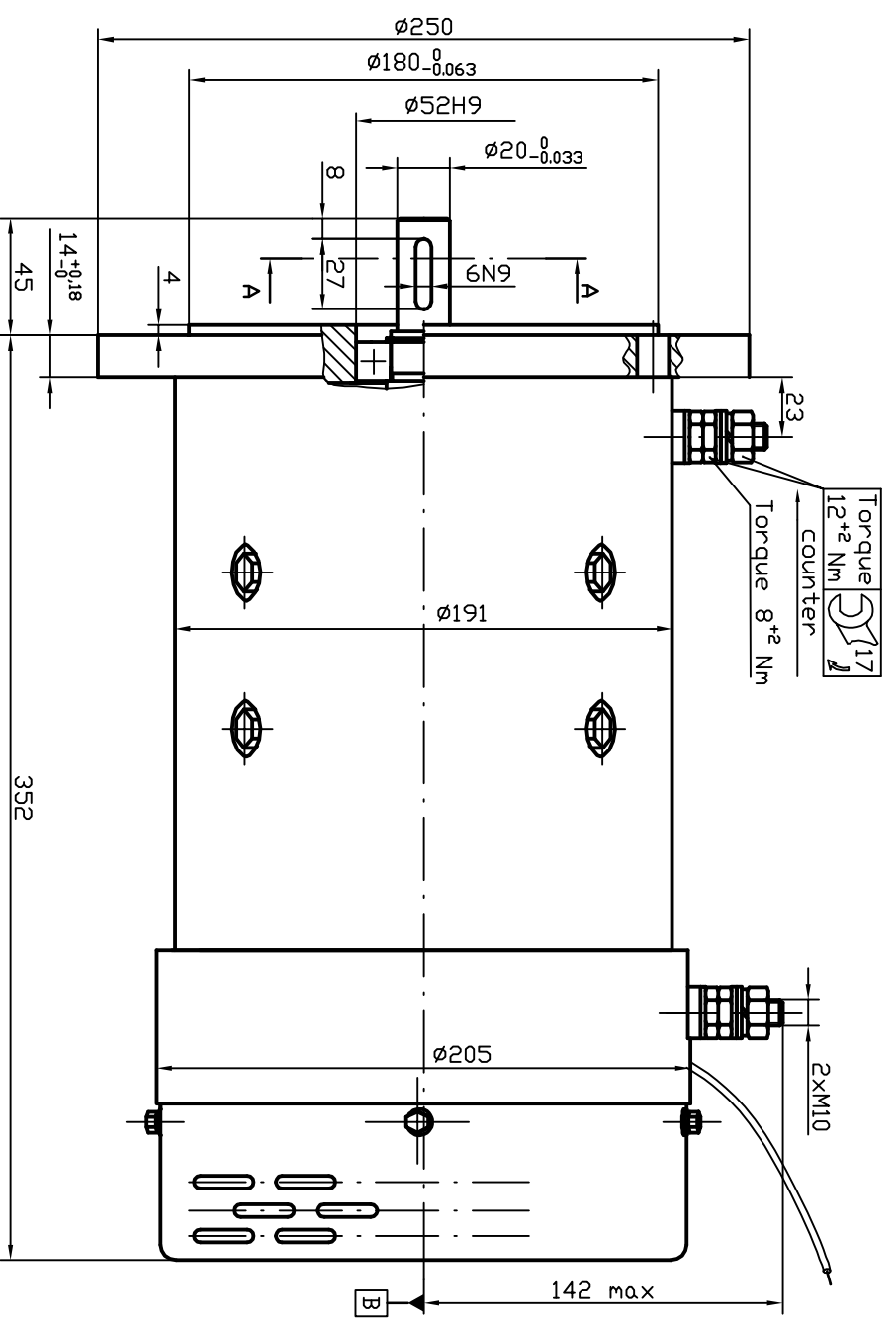


KE 44A



EC 14/4.8/35
0 48 33 5000

rated power 14 kW
 rated voltage 48 V
 rated current 360 A
 operation speed 3500 min⁻¹
 excitation mode S2-2min
 series IP 21
 protection F
 insulation F
 weight length L
 char. curve C.C.W.D.E.
 rotation

EC 14/2.4/26-02.1
0 48 12 6021

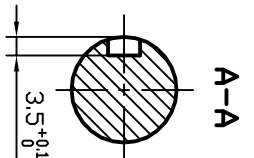
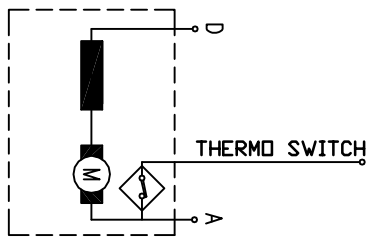
rated power 14 kW
 rated voltage 24 V
 rated current 2600 min⁻¹
 operation speed 2600 min⁻¹
 excitation mode S2-
 series IP 21
 protection F
 insulation F
 weight length L
 char. curve C.C.W.D.E.
 rotation

EC 14/2.4/26-02
0 48 12 6020

rated power 14 kW
 rated voltage 24 V
 rated current 770 A
 operation speed 2600 min⁻¹
 excitation mode S2-2.5min
 series IP 21
 protection F
 insulation F
 weight length L
 char. curve S24E10 *
 C.C.W.D.E.
 rotation

EC 15.5/2.4/34
0 49 13 4000

rated power 15.5 kW
 rated voltage 24 V
 rated current 980 A
 operation speed 3400 min⁻¹
 excitation mode S2-2min
 series IP 21
 protection F
 insulation F
 weight length L
 char. curve C.C.W.D.E.
 rotation



KOSTOV MOTORS

excit. insulation

rpm A V duty

kg S.N.

www.kostov.com

Balkancar "G. Kostov" JSC

20.07.2012

26.01.2012

25.10.2011

27.04.2011

Rev.

1 2 3 4 5 6 7

A B C D E F G H