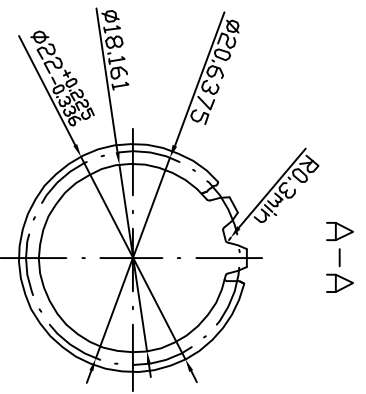
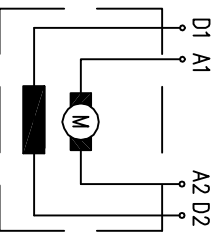


Rotation (viewed from drive end)
 CCW: Connect A2 to D1; "+" to D2 and "-" to A1
 CW: Connect A2 to D2; "+" to D1 and "-" to A1

EXTERNAL INVOLUTE SPLINE DATA	
CLASS 5 FLAT ROOT SIDE FIT ANSI B 92.1	
No of teeth	13
Pressure angle	30°
Pitch	16/32
Pitch dia	0.8125 REF
Base dia	0.7036 REF
Major dia	0.875/0.853
Form dia	0.7493
Minor dia	0.715
Circ. space width	
MAX actual	0.0956
MIN effective	0.0982
The following information may be abked as required!	
MIN measurement between pins	0.98267
Pin dia	0.12



FT 3,8/4,8/24	3.8 kW
0 33 32 4000	48 V
rated power	100 A
rated voltage	2400 min ⁻¹
rated current	S2-60min
rated speed	series
operation mode	IP 21
excitation	F
protection	30.5 kg
insulation	S48E02
weight	REV
length L	
chr. curve	
rotation	



	15.11.2006		Balkancar
<input type="checkbox"/> kW	24.11.1997	<input type="checkbox"/> IP	"G. Kostov" JSC
<input type="checkbox"/> rpm	18.02.1997	<input type="checkbox"/> Insulation	
<input type="checkbox"/> kg	08.11.1995	<input type="checkbox"/> daisy	
<input type="checkbox"/> S.N.	13.09.1995	<input type="checkbox"/> S.N.	
<input type="checkbox"/> www.kostov..motors.com		<input type="checkbox"/> S.N.	

Rev.	G	H