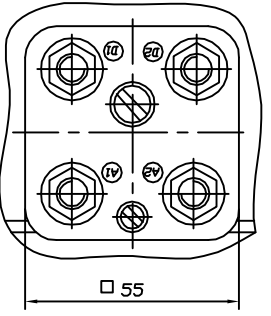
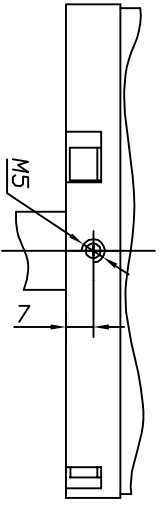
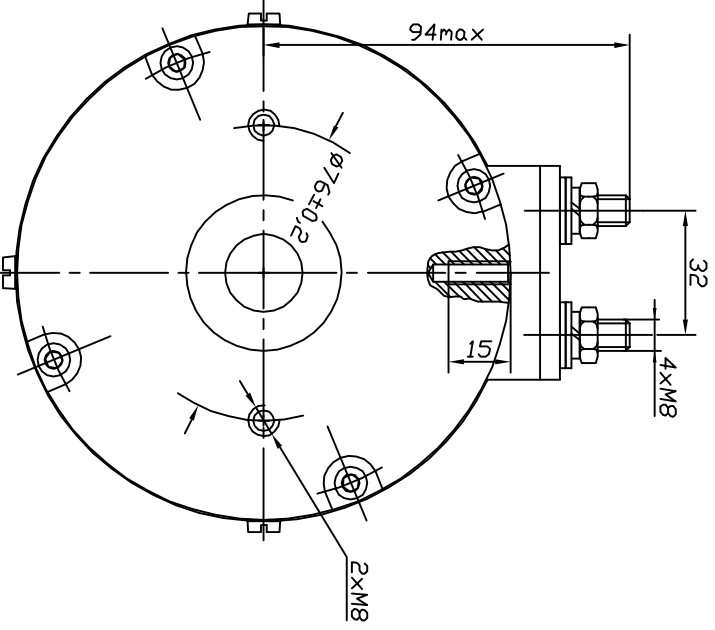
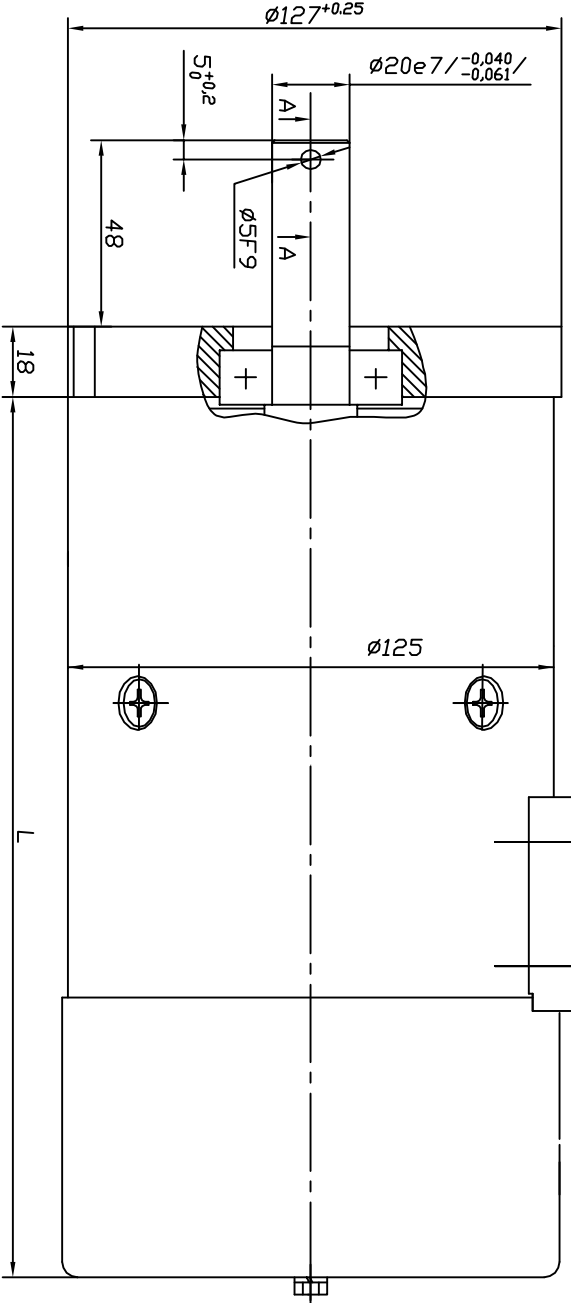
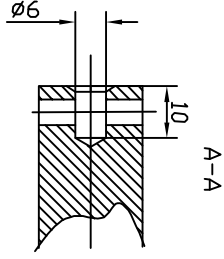


KB 92



Rotation (viewed from drive end)  
CCW: Connect A2 to D1, '+' to D2 and '-' to A1  
CW: Connect A2 to D2, '+' to D1 and '-' to A1

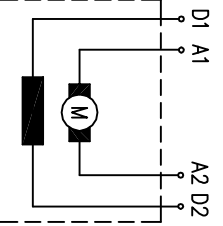
EC 4/1,2/30  
0 33 03 0000

rated power 4 kW  
rated voltage 12 V  
rated current 460 A  
rated speed 3000 min<sup>-1</sup>  
operation mode SE-1,5min  
excitation series  
protection IP 21  
insulation F  
weight 11,7  
length 226,5  
char. curve S1B34  
rotation REV

EC 4/2,4/30  
0 33 13 0000

rated power 4 kW  
rated voltage 24 V  
rated current 233 A  
rated speed 3000 min<sup>-1</sup>  
operation mode SE-1,5min  
excitation series  
protection IP 21  
insulation F  
weight 9,3  
length 179  
char. curve S24B34  
rotation REV

<b>KOSTOV MOTORS</b>		excit. <input type="checkbox"/>	
IP <input type="checkbox"/> insulation <input type="checkbox"/>			
kW <input type="checkbox"/>	A <input type="checkbox"/>	V <input type="checkbox"/>	duty <input type="checkbox"/>
rpm <input type="checkbox"/>	kg <input type="checkbox"/>	S.N. <input type="checkbox"/>	
www.kostovmotors.com			



23.07.2004	<b>Balkanear "G. Kostov" JSC</b>
11.03.2004	
16.09.2003	
14.03.2003	
19.02.2003	
Rev.	