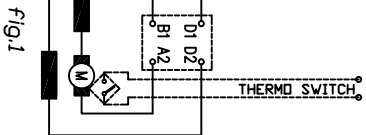
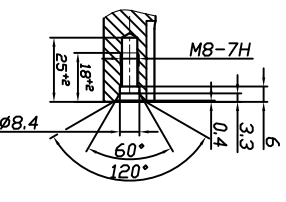
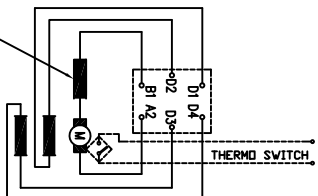


KOSTOV 10" R20-32880
 KOSTOV 11" R20-32847

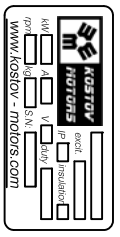
Motor	Duty cycle	Field mode	Volts	Amps	RPM	Torque	KW	fig.
K10"	S2-60min	series	90	255	3400	54	19.3	
K10"	S2-60min	series	115	270	4500	56	26.2	fig. 1
K10"	S2-60min	series	139	270	5400	56	31.6	
K11"	S2-60min	parallel	139	250	3950	73	30.3	
K11"	S2-60min	parallel	160	250	4600	73	35.0	
K11"	S2-60min	parallel	185	250	5300	73	40.4	fig. 2
K11"	S2-60min	series	185	210	4250	77	34.1	
K11"	S2-60min	series	212	210	4800	77	38.7	
K11"	S2-60min	series	240	210	5550	77	44.8	



Rotation (viewed from drive end)
 CCW: Connect D2 to A2;
 '+' to D1 and '-' to B1
 CW: Connect D1 to A2;
 '+' to D2 and '-' to B1



Rotation (viewed from drive end)
 Series field mode:
 CCW: Connect D2 to D3;
 A2 to D4 '+' to D1 and '-' to B1
 CW: Connect D1 to D4;
 A2 to D3 '+' to D2 and '-' to B1
 Parallel field mode:
 Connect D1 to D3 and D2 to D4
 CCW: Connect A2 to D2;
 '+' to D1 and '-' to B1
 CW: Connect B1 to D2;
 '+' to D1 and '-' to A2



excitation series
 protection IP 21
 insulation YES
 interpoles YES
 weight 81kg (69kg for K10" 144V)
 rotation rev
 Coating: black

28.01.2013	Balkancar "G. Kostov" JSC
24.01.2013	
Rev.	