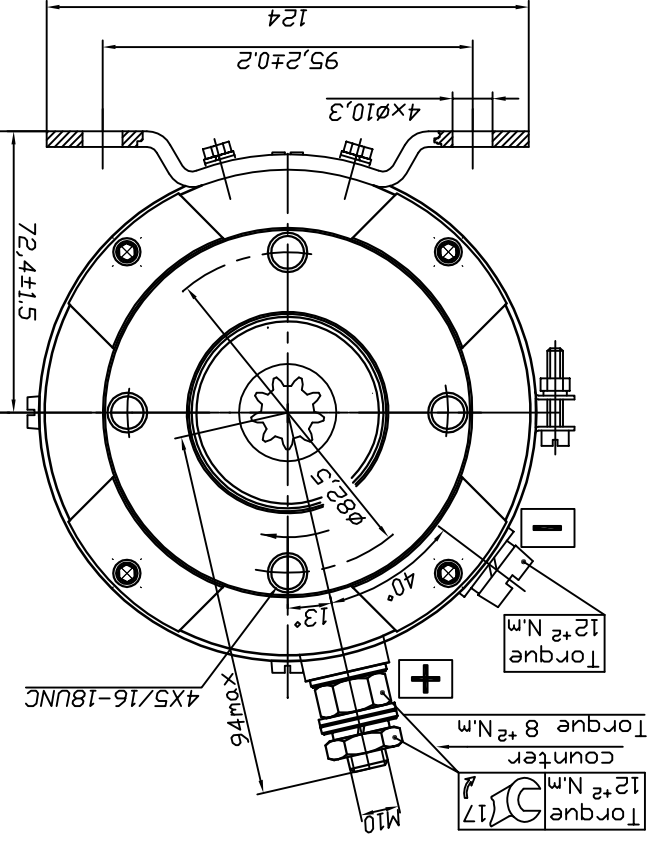
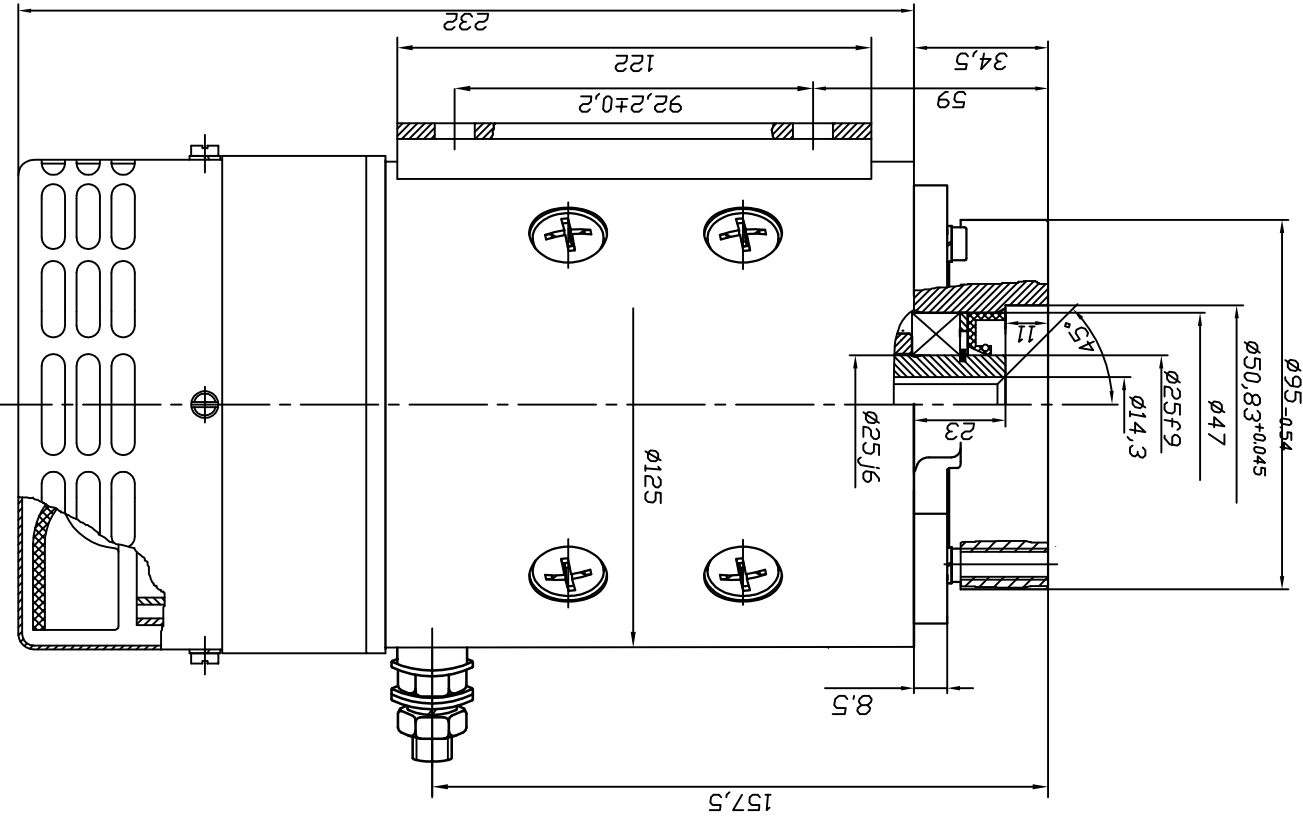
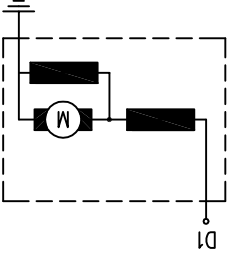


INTERNAL INVOLUTE SPLINE DATA	
CLASS 5 FLAT ROOT SIDE FIT PERANSI B 92.1	No of teeth
9	Pressure angle
30°	Pitch
20/40	Pitch dia
0,45	Base dia
0,3897114	Major dia
0,559	Form dia
0,504	Minor dia
0,767-0,772	Circ. space width
0,080	MAX actual
0,0785	MIN effective
The following information may be added as required:	
MAX measurement between pins	
Pin dia	

SPLINE INDUCTION HARDENED
TD RC 40-48 020 MIN DEPTH

rated power 3 kW
rated voltage 12 V
rated current 360 A
rated speed 3500 min⁻¹
operation mode S2-10min
compound excitation IP 21
insulation F
weight 11,1 kg
length L C12B04
char. curve C.W.D.E
rotation

EC 3/1,2/35-28
0 31 03 5280



B 43

Elprom-EMS



24.11.2008
07.04.2008
31.10.2006
20.05.2002
21.10.1997
Rev.

H

G

F

E

D

C

B

A

1

2

3

4

5

6

7

H

G

F

E

D

C

B

A

1

2

3

4

5

6

7