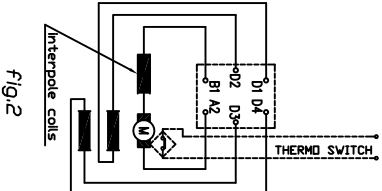
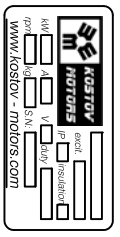
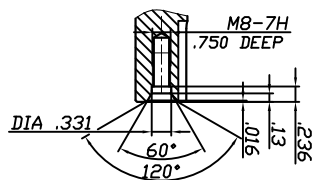


Rotation (viewed from drive end)
 CCW/ Connect D2 to A2;
 CW/ Connect D1 to A2;
 '+' to D1 and '-' to B1
 '+' to D2 and '-' to B1



Rotation (viewed from drive end)
 Series field mode:
 CCW/ Connect D2 to D3;
 CW/ Connect D2 to D1 and
 A2 to D4 '+' to D1 and '-' to B1
 Parallel field mode:
 CCW/ Connect D1 to D3 and D2 to D4
 CW/ Connect A2 to D2;
 '+' to D1 and '-' to B1
 '+' to D1 and '-' to D2;
 '+' to D1 and '-' to A2

Motor	Duty cycle	Field mode	Volts	Amps	RPM	Torque	KW	fig.
K10" 144V	S2-60min	series	90	255	3400	54	19.3	
K10" 144V	S2-60min	series	115	270	4500	56	26.2	
K10" 144V	S2-60min	series	139	270	5400	56	31.6	fig. 1
K11" 192V	S2-60min	series	139	250	3950	73	30.3	
K11" 192V	S2-60min	series	160	250	4600	73	35.0	
K11" 192V	S2-60min	series	185	250	5300	73	40.4	
K11" 250V	S2-60min	parallel	139	250	3950	73	30.3	
K11" 250V	S2-60min	parallel	160	250	4600	73	35.0	
K11" 250V	S2-60min	parallel	185	250	5300	73	40.4	fig. 2
K11" 250V	S2-60min	series	185	210	4250	77	34.1	
K11" 250V	S2-60min	series	212	210	4800	77	38.7	
K11" 250V	S2-60min	series	240	210	5550	77	44.8	



excitation series
 protection IP 21
 insulation YES
 interpoles YES
 weight 81kg (69kg for K10 144V)
 rotation rev
 Coating: black

05.05.2011	 Balkancar "G. Kostov" JSC
17.02.2011	
01.11.2010	
13.08.2010	
Rev.	