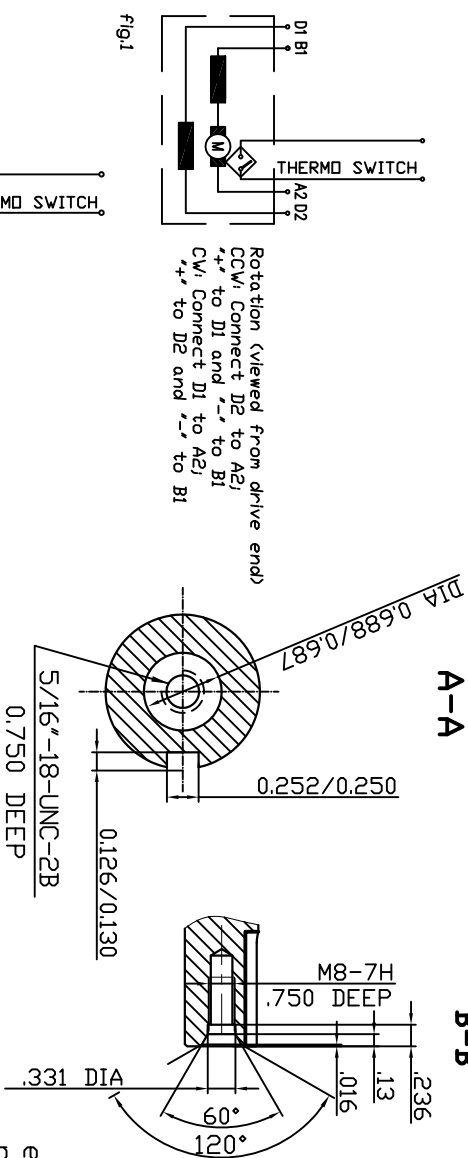


Torque  
12<sup>+</sup> Nm

E 62C

\* Bolts should be chosen so that they do not protrude by more than 16mm measured from the outer face of the shield. (Non compliance may result in a short circuit.)

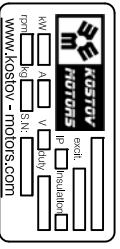


Rotation (viewed from drive end)  
CCW: Connect D2 to A2;  
“+” to D1 and “-” to B1  
CW: Connect D1 to A2;  
“+” to D2 and “-” to B1

Rotation (viewed from drive end)  
Series field mode:  
CCW: Connect D2 to D3;  
A2 to D4 “+” to D1 and “-” to B1  
CW: Connect D1 to D4;  
A2 to D3 “+” to D2 and “-” to B1  
Parallel field mode:  
Connect D1 to D3 and D2 to D4  
CCW: Connect A2 to D2;  
“+” to D1 and “-” to B1  
CW: Connect B1 to D2;  
“+” to D1 and “-” to A2

Motor	Duty cycle	Field mode	Volts	Amps	RPM	Torque	KW
K9° 96V	S2-60min	-	90	280	6400	31	20.5
K9° 144V	S2-60min	-	139	200	5700	40	23.3
K9° 220V	S2-60min	series	212	176	6800	44	31.2
K9° 220V	S2-60min	parallel	139	200	5750	40	23.3

excitation series  
protection IP 21  
insulation H  
Interpoles: YES  
weight kg  
rotation REV



Coating: black

18.10.2011	<p>Balkancar "G. Kostov" JSC</p>
27.09.2011	
26.01.2011	
Rev.	